

# Egcodubel high-strength with stainless steel sleeve for transverse movement, stainless steel, Ø 22 mm

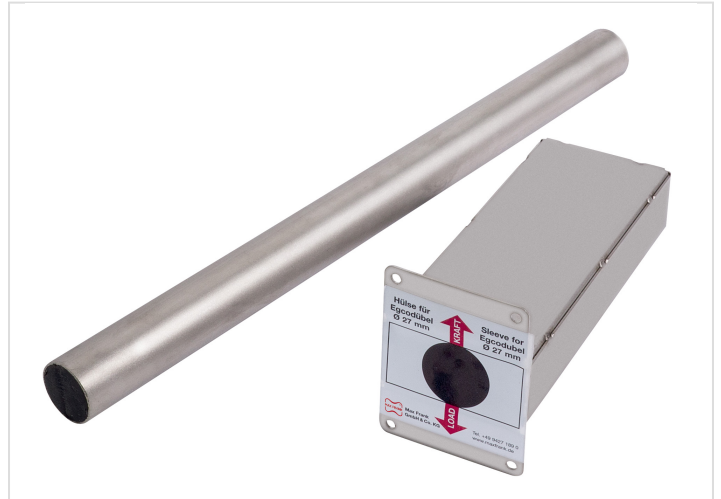
Item No. EDM22HFHQI

[▶ more product details](#)

Egcodubel high-strength - HF

- Yield strength core material  $f_{yk} = 750 \text{ N/mm}^2$

[▶ more information](#)



## Technical Data

Application	Low to medium loads	Diameter	22	mm
Mandrel system	Dowel	Length	340	mm
Direction of movement	longitudinally and laterally moveable	Sleeve length	215	mm
Transverse displacement	±15 mm	Corrosion protection	Stainless steel	
Joint opening	0 - 60 mm	Weight	1,400	kg/pce
Type of sleeve	Stainless steel, transverse movement	Storage unit	Pce	
Steel grade	high-strength	WG:	120	

All anchor sleeves are longitudinally adjustable, the HQI types are longitudinally and transversely adjustable.

The diameter indication for Egcodubel with stainless steel casing refers to the external diameter. The diameter of the respective steel core is the external diameter minus 2 mm.