

# Stabox® continuity strip special version SK

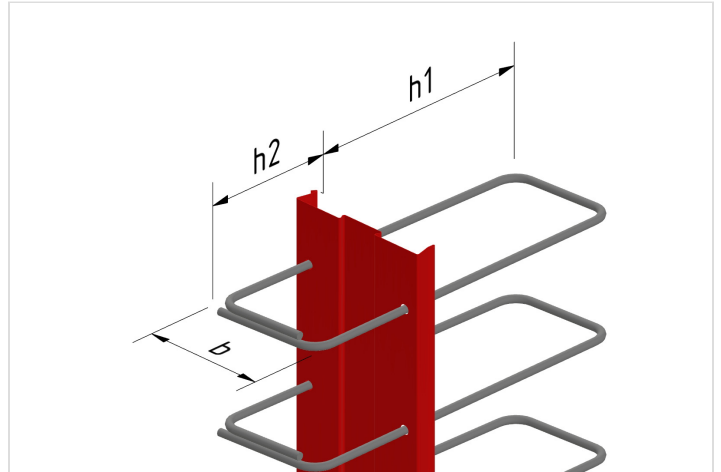
Item No. STASK



[▶ more product details](#)

Stabox® S special versions, double row

- The Stabox® special SD double-edged reinforcement connection version can be used to seal working joints with continuous reinforcement.
- For water-impermeable concrete structures, the special SD version can be combined with the Intec® injection hose system or Cresco® expanding waterstop
- The Stabox® special SD version is recommended for stirrup widths greater than 23 cm



[▶ more information](#)

## Technical Data

Stirrup height h	customer requirements	mm	Overlap length l <sub>0</sub>	customer requirements	mm
Stirrup width	70-230 depending on box width	mm	Access box length	customer requirements	m
Stirrup spacing	100/150/200	mm	Indentation	across the box	
Single or twin row box	double row		Box type	9 B, 12 B, 15 B, 19 B, 22 B, 25 B	
Type	Special stirrup type SK		Length	1.250 mm	
Box width	90, 120, 150, 190, 220, 250	mm	Storage unit	Metre	
For total wall thickness	customer request		WG:	80	
Steel diameter	8/10/12		mm		

$v, v_1, v_2 \geq 100 \text{ mm}$ .

For corbel types, there may be differences in the dimension  $h_1$  of 10 to 20 mm due to production and installation.